



GREEN CEDAR
HOMES



1474 square ft.

2 Bedrooms
2 Bathrooms

LILY

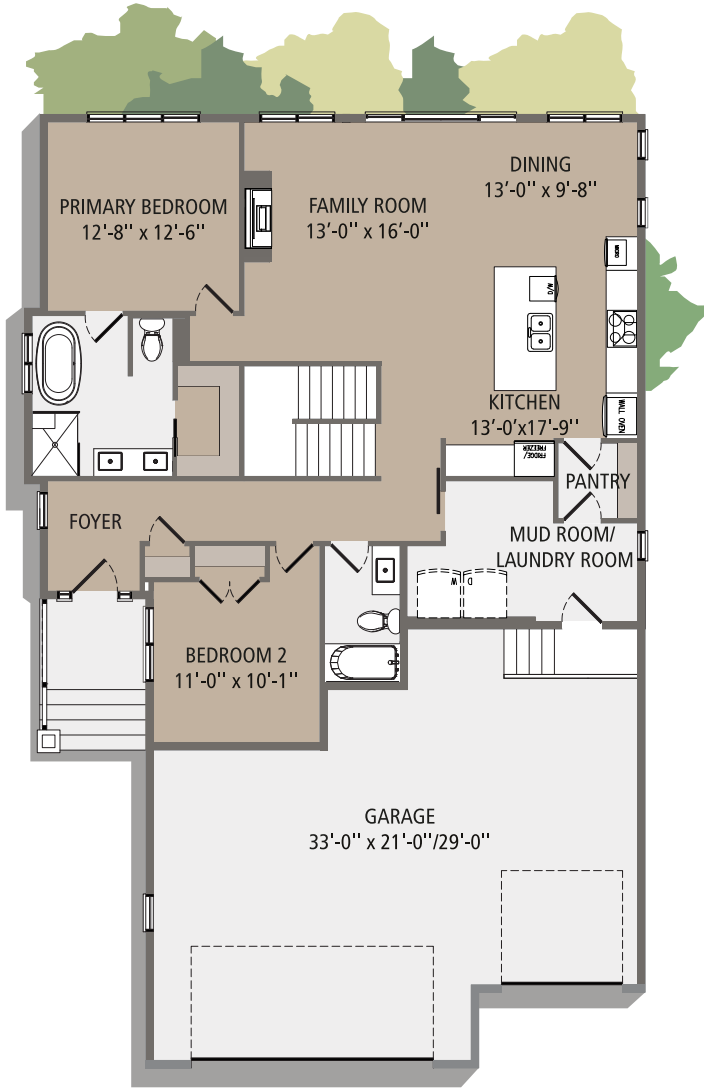
The symbol for your soul

Inspired by exquisite designs, open spaces and detailed finishing, the Lily is one of the most awe-inspiring Green Cedar Homes. This two bedroom bungalow features high ceilings, precise detailing throughout, a grand staircase, massive kitchen with top of the line appliances, a wonderful primary bedroom and large great room and dining area.

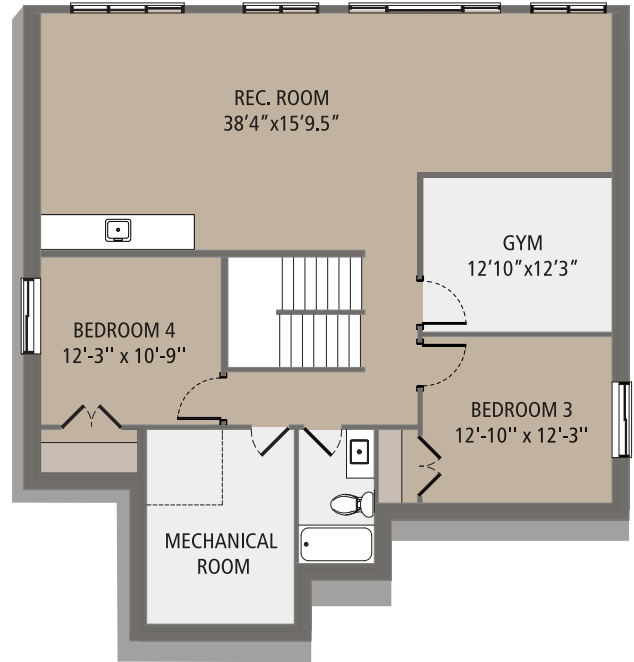
The optional lower level includes a rec room that spans more than 34 feet, a wet bar, 2 more large bedrooms, an office and a gym. But what makes this home so unique is the large hallways and common areas that can be used for your desire. The tandem triple garage can also be used as a workshop or extra storage.

Lily - The symbol for your soul that defines your unique style!

GREENCEDARHOMES.CA



Main Floor Plan



Optional Walkout Basement Floor Plan

*Floorplans are illustrative for marketing purposes.
Final plans may differ. Contact a Green Cedar
Representative for more information.*

Designed with you. Built by us.